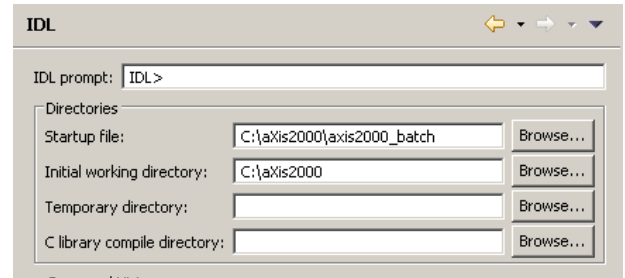
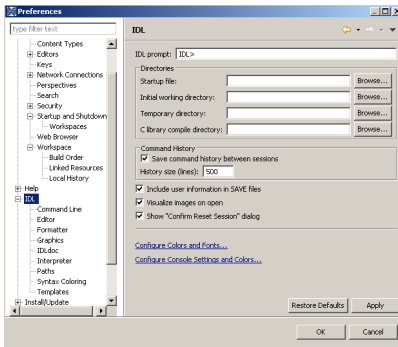


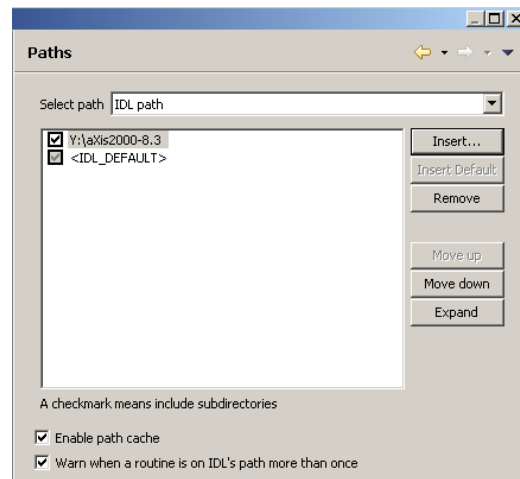
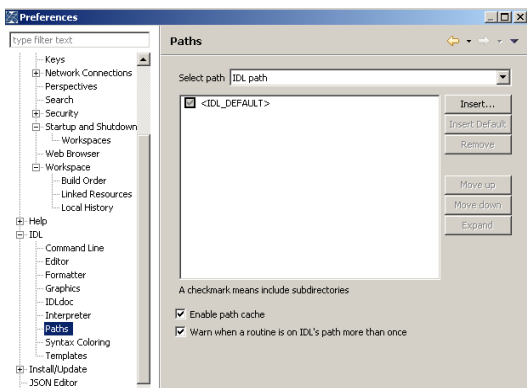
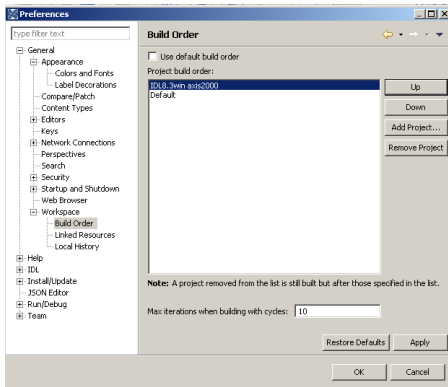
Modifying IDL8.3 to run aXis2000

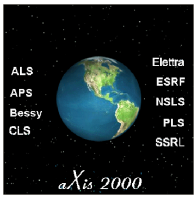
In IDL8.3 Development (Eclipse)
Windows~preferences

IDL - set startup file and initial working directory:



General~workspace~Build order - make source directory the top area

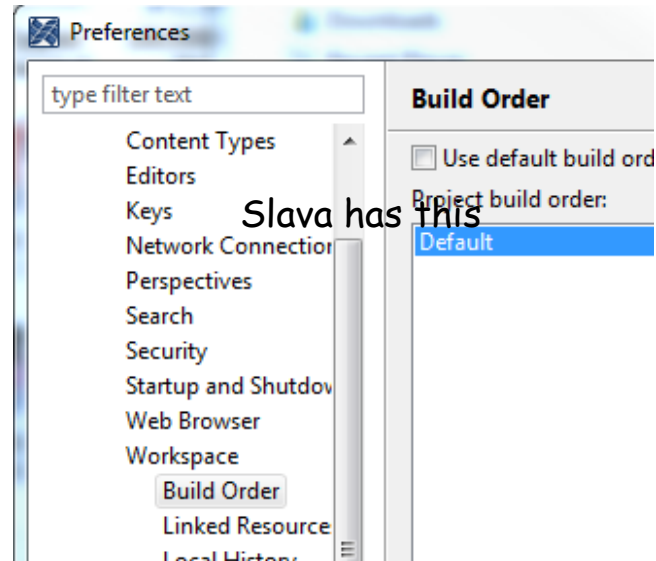
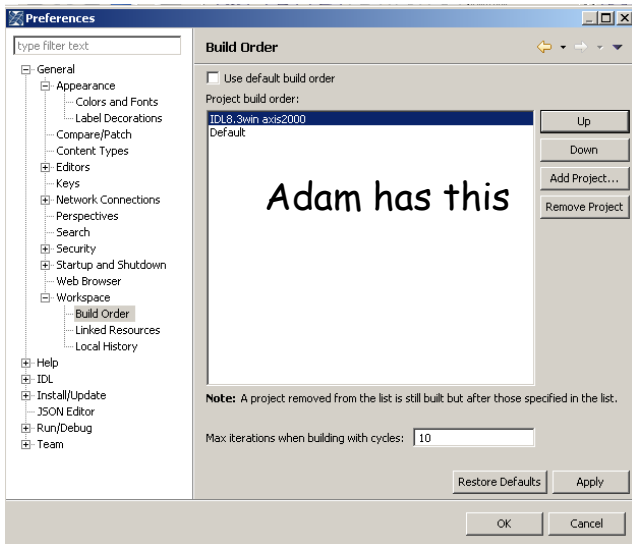




Slava's questions

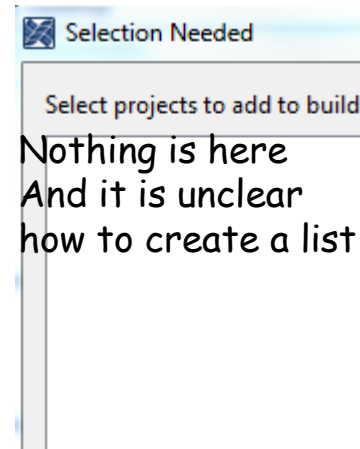
In IDL8.3 Development (Eclipse)
Windows ~ preferences

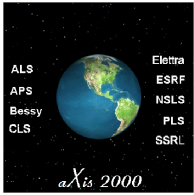
1) General~workspace~Build order - make source directory the top area



General~workspace~Build order - How can I add a project IDL8.3win axis2000 in the project build order?

If I click on Add project I have this window ->

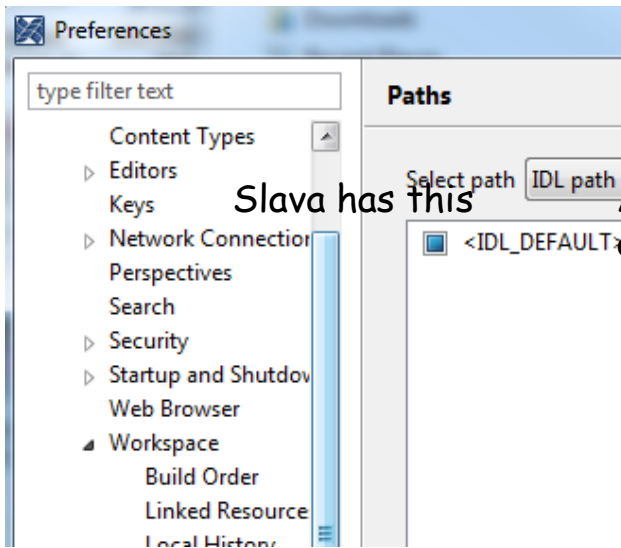
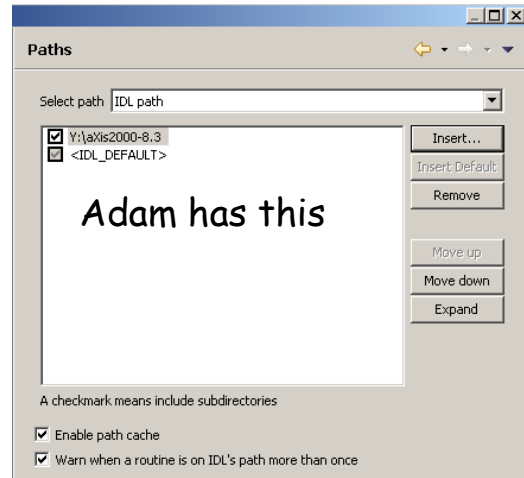
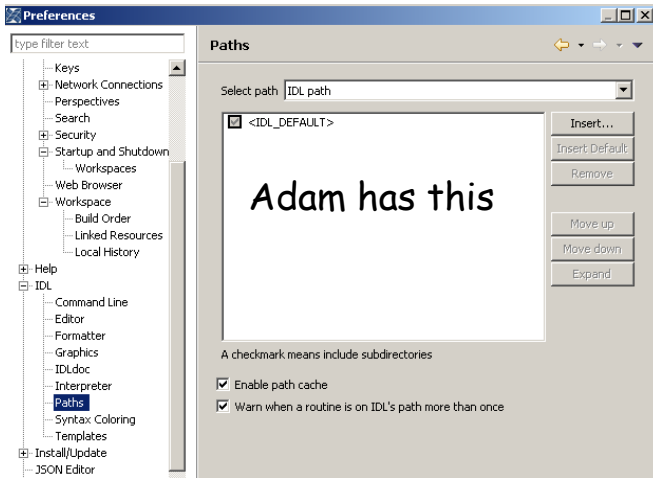




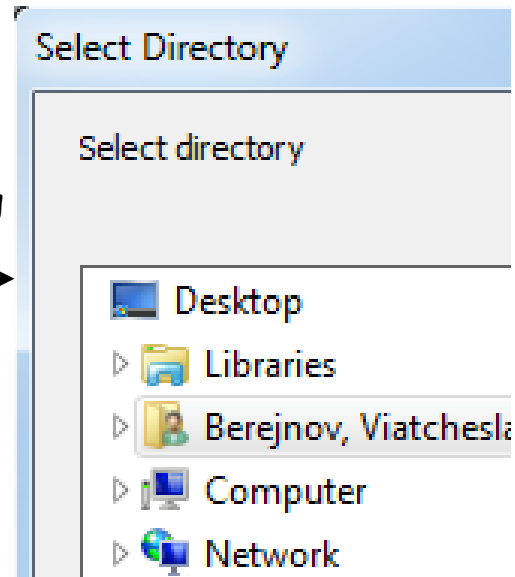
Slava's questions

In IDL8.3 Development (Eclipse)
Windows ~ preferences

2) General~IDL~Paths



After clicking on insert



Where I suppose to find this `Y:\axis2000-8.3`
And what I suppose to have there?