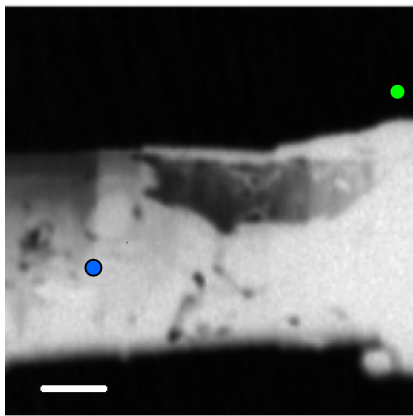


Selecting a sub-set of a stack

GOAL: truncate a stack using stack process
 - ie reduce the spatial area of the stack

Example: Max_220513017

1. open stack (*Stacks~Analyze~stack process*)
2. save image (*avg Stack, or save a single image*)
3. read into aXis2000 (*Read~Images~AXIS*)
4. identify pixel range for the area of interest



● 24, 48

X	2.3807	24
Y	4.7016	48
Z	3.1420	

● 134, 107

X	13.049	134
Y	10.395	107

Hint deselect x-lines so the x,y,z values are only updated when the left mouse is clicked

5. Write out the stack using (24,134) as x-limits and (48, 107) as y-limits

6. check the reduced-area stack is what you want - if not try again.

