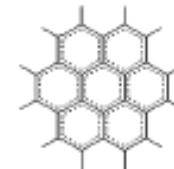


Comparison of 3-methods of deriving chemical maps in aXis2000

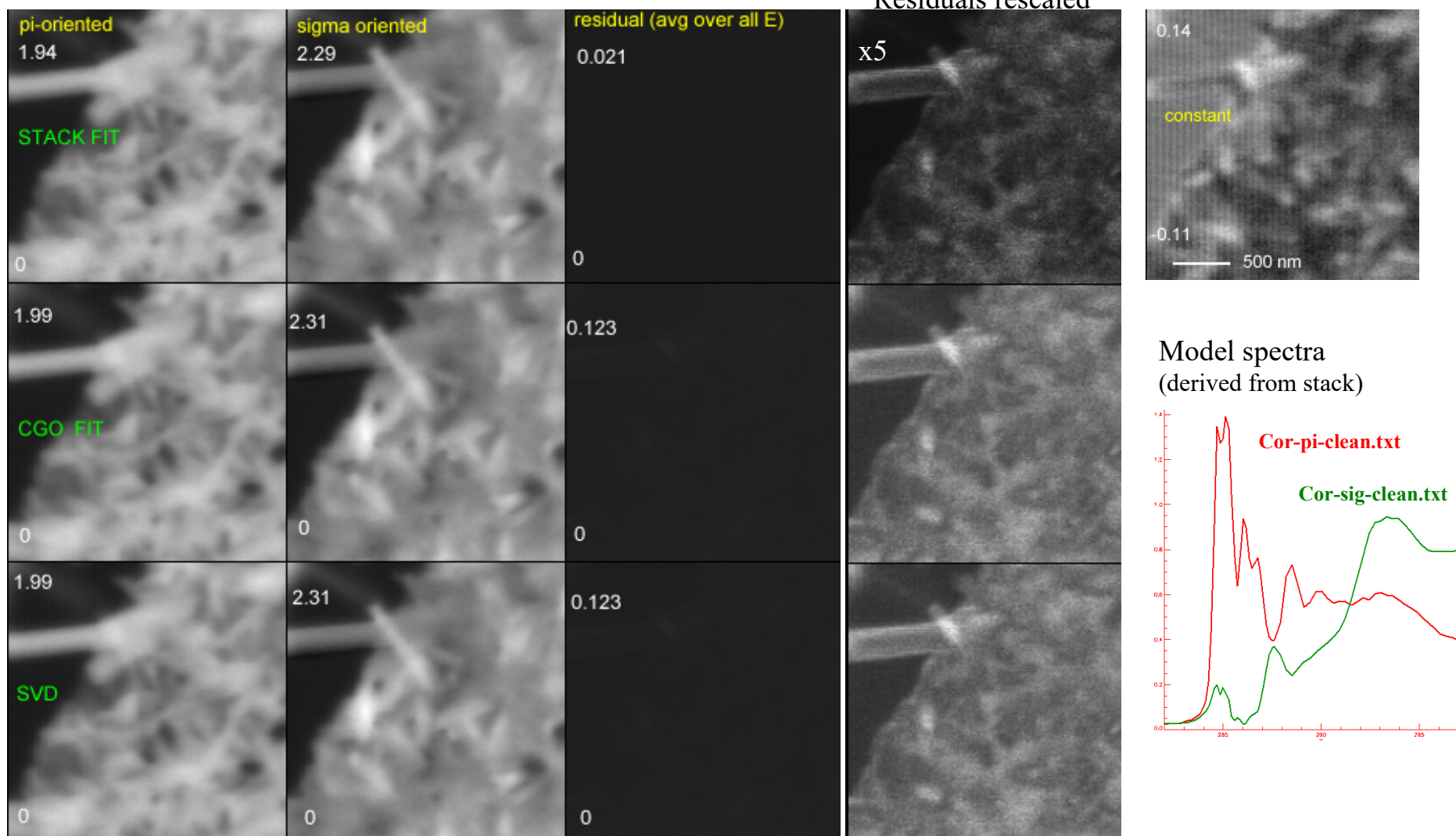
Adam Hitchcock (McMaster)

Sample (courtesy Ray Egerton, U. Alberta) crystalline thin film of **coronene**

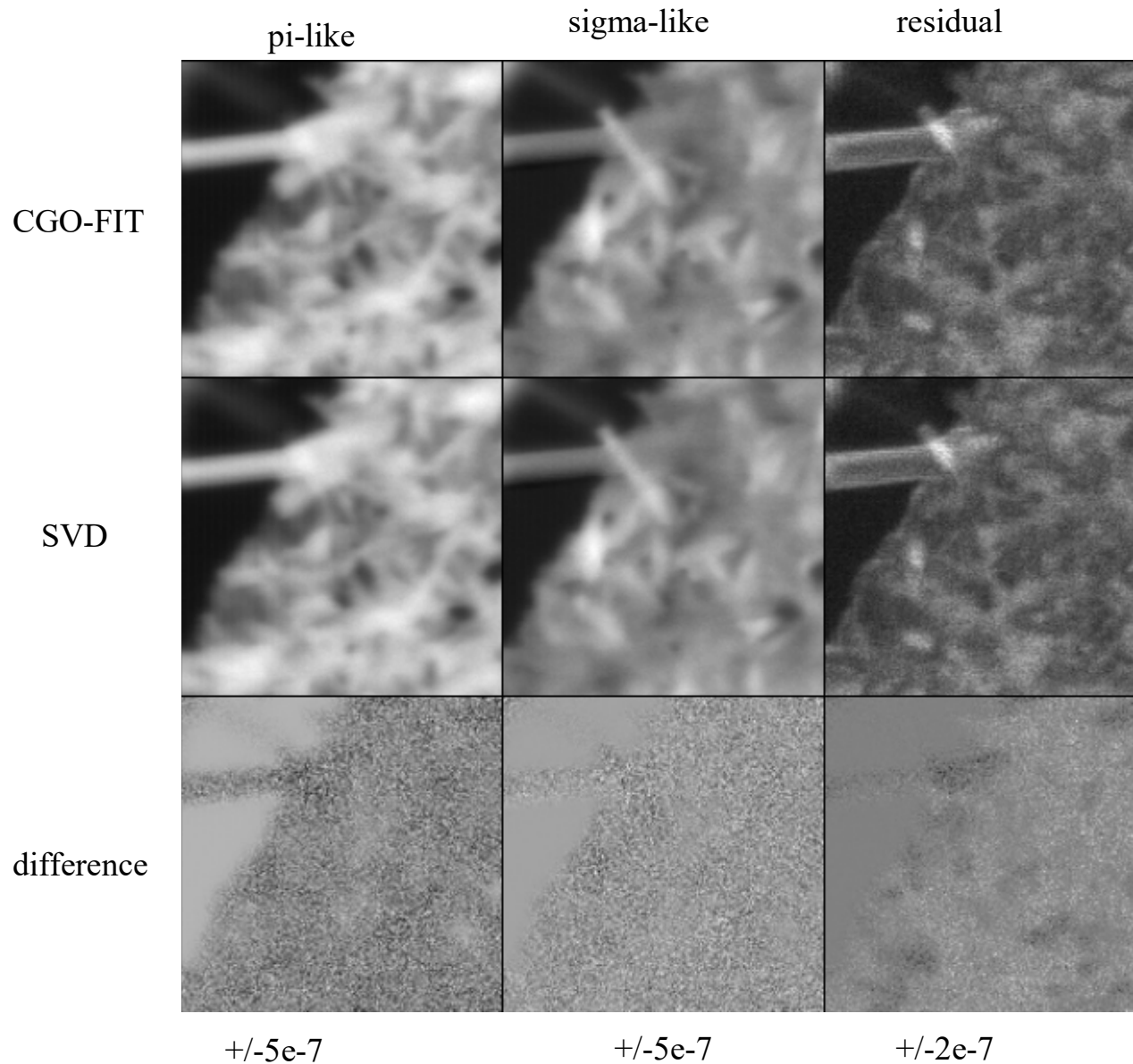
Data (67 images in C 1s region) recorded Jul-03 at ALS STXM532



Residuals rescaled



CGO_fit and SVD give similar results



STACK FIT differs since it has an additional component (constant term).

This gives better quality fits, both due to additional flexibility, and since often there is an unaccounted constant background in either the stack or model spectra (often due to the fact Io signals are recorded at different times from the stack)