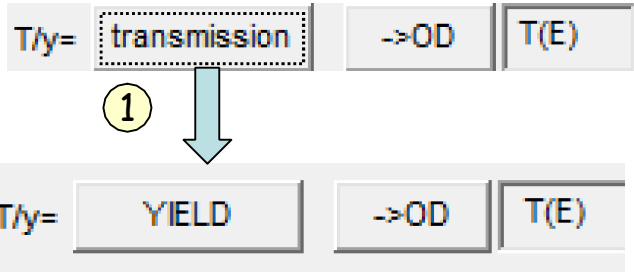
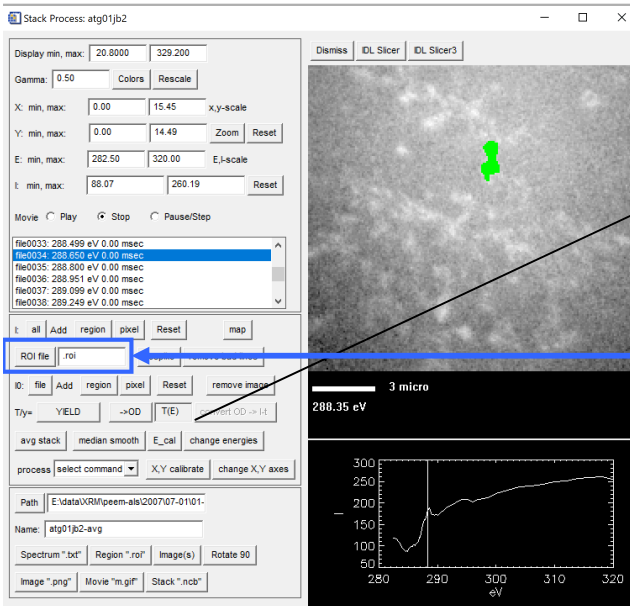


# Stack process: XPEEM & yield normalization

File: ALS PEEM2: 2007\_01\_20\_Alb\_trigly\_01

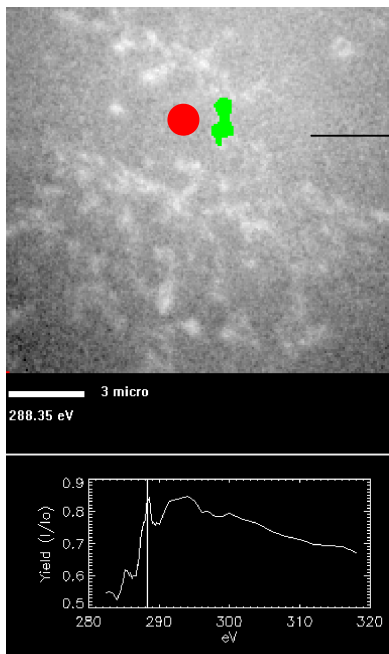
Albumin and Triglycine on Si



② Input io from external file (measured on HF-etched Si)

**DO NOT push ->OD button !**

③ Write out normalized stack for further processing



TEY/I<sub>0</sub>

