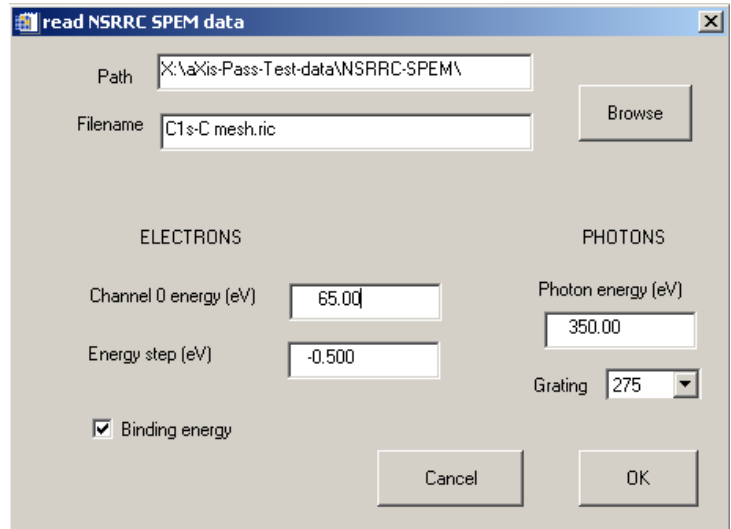
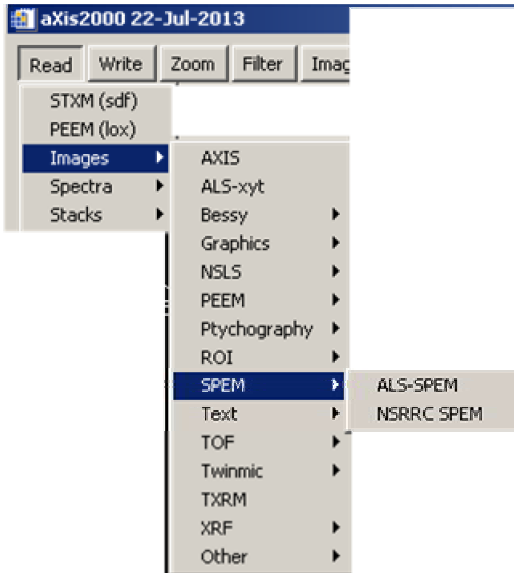


# Reading in NSRRC SPEM images

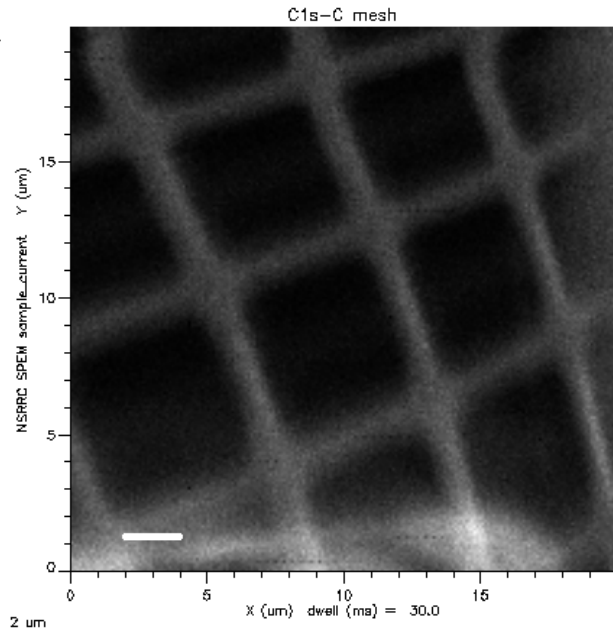
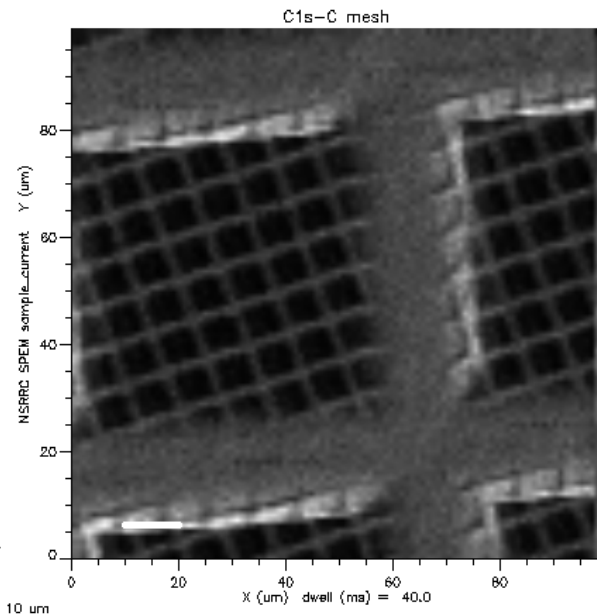
Contacts: SPEM staff scientist: C.H. Chen (chchen@nsrrc.org.tw)

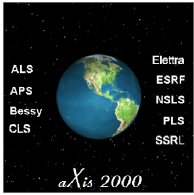
Example files supplied

	C1s-C mesh.pic	14/03/2013 2:20 PM	3,595 KB
	C1s-C mesh.ric	14/03/2013 2:20 PM	900 KB



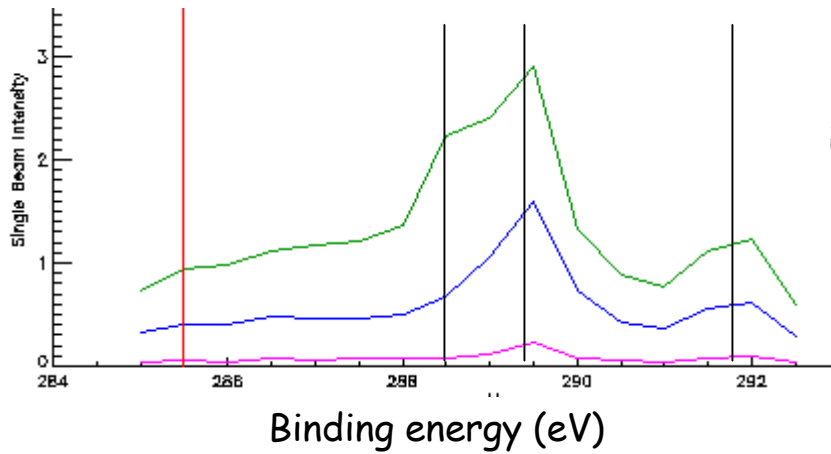
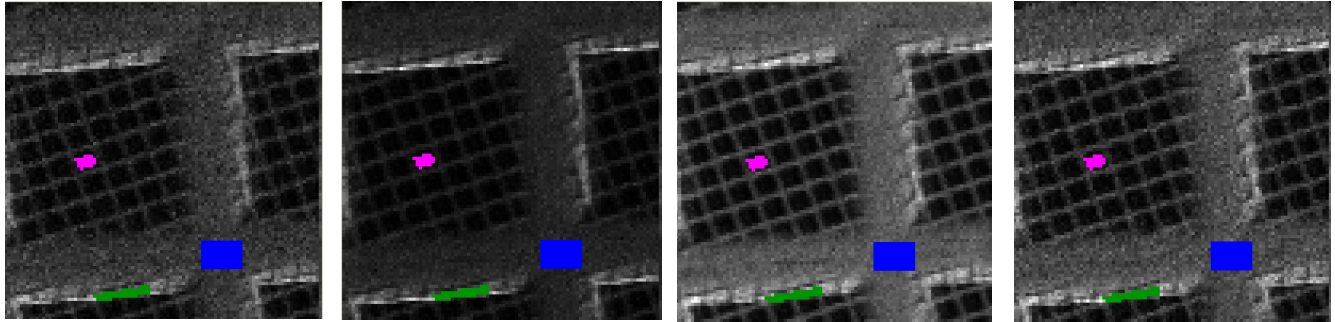
**Sample current image is placed into currently selected buffer in aXis2000 & STACK of the energy analyser images is written**





# Reading in NSRRC SPEM images

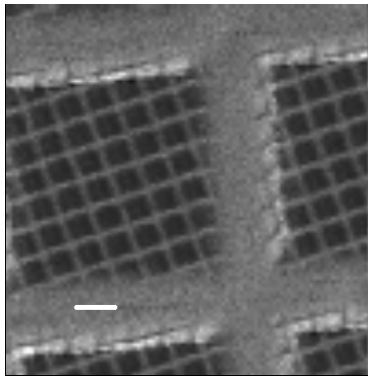
STACK of the energy analyser images is written



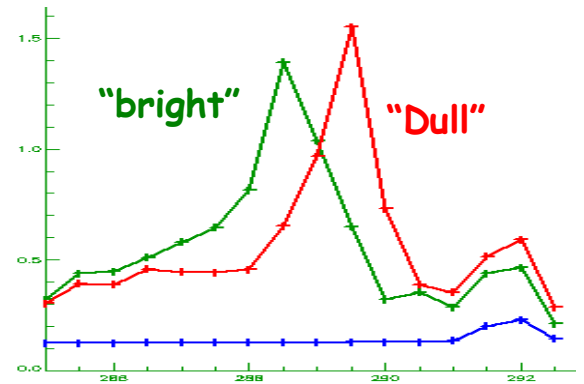
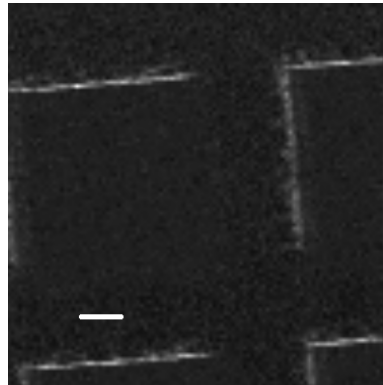
E-scale guessed at !

2 types of Carbon ?  
Or  
Electron optical effect ?

"Dull"

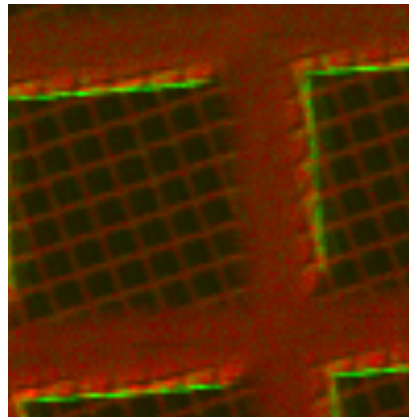
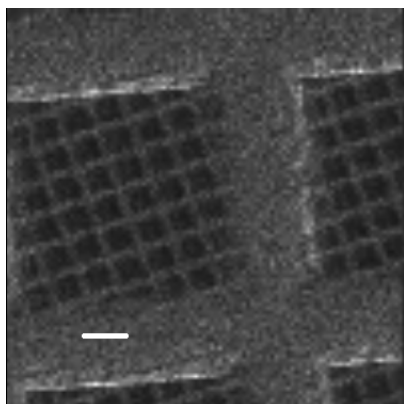


"bright"



Oxide ?

residual



When try to fit with separate oxide peak, the fit does not work - not 3 independent components