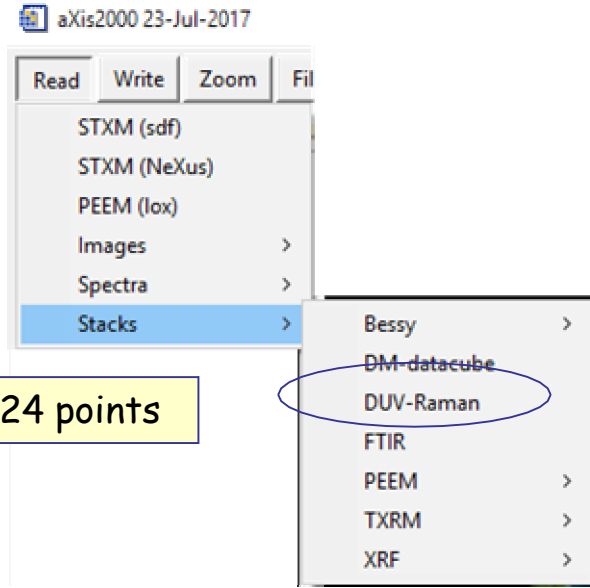
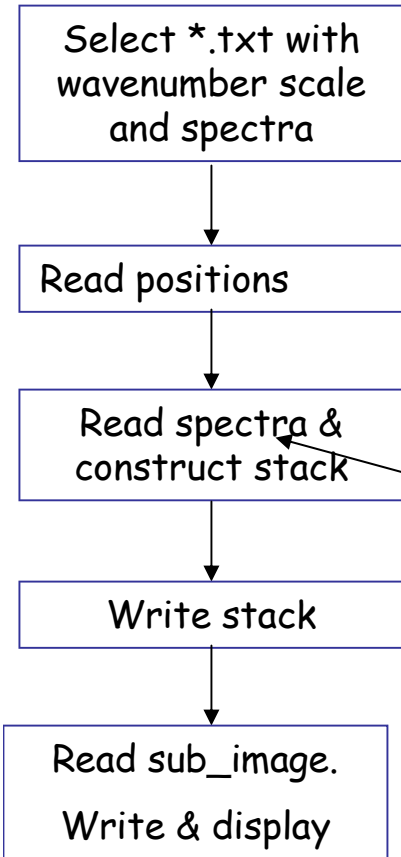


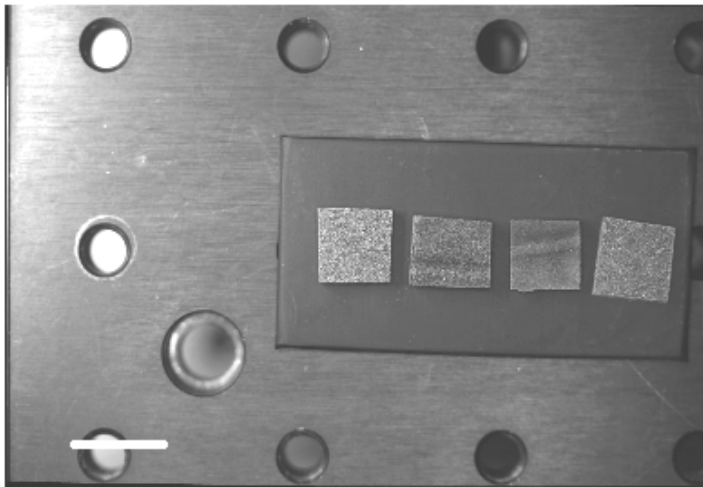
# Read\_DUV\_stack

Files: SURF\_1216\_01\_001\_Raman\_01.txt (v, 962 spectra)  
positions.xls → SURF\_1216\_01\_001\_Raman\_01\_positions.txt  
subimage.tif  
context\_image.tif (68 Mb !) → context\_image.jpg (0.17Mb)



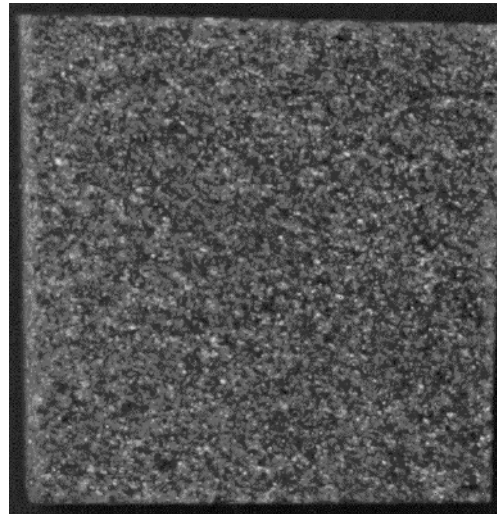
ASSUMES 1024 points

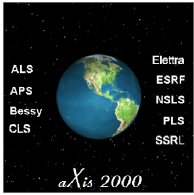
Context image



200 um

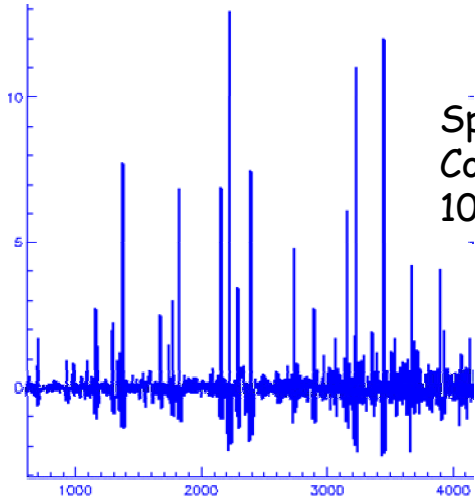
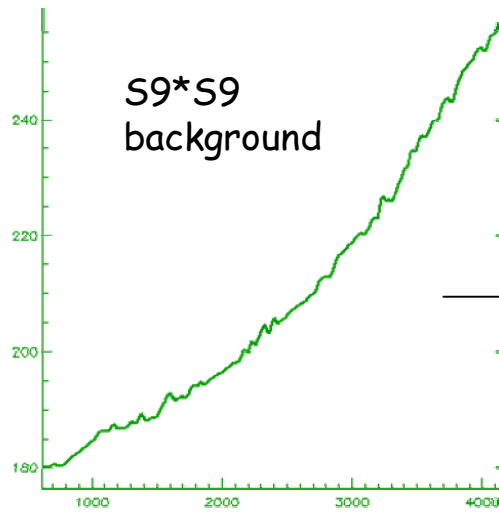
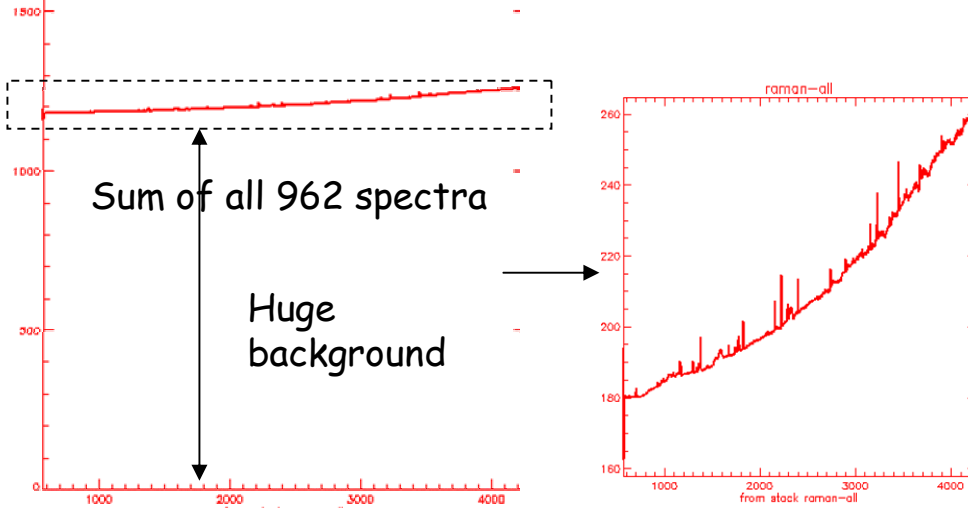
Sub\_image



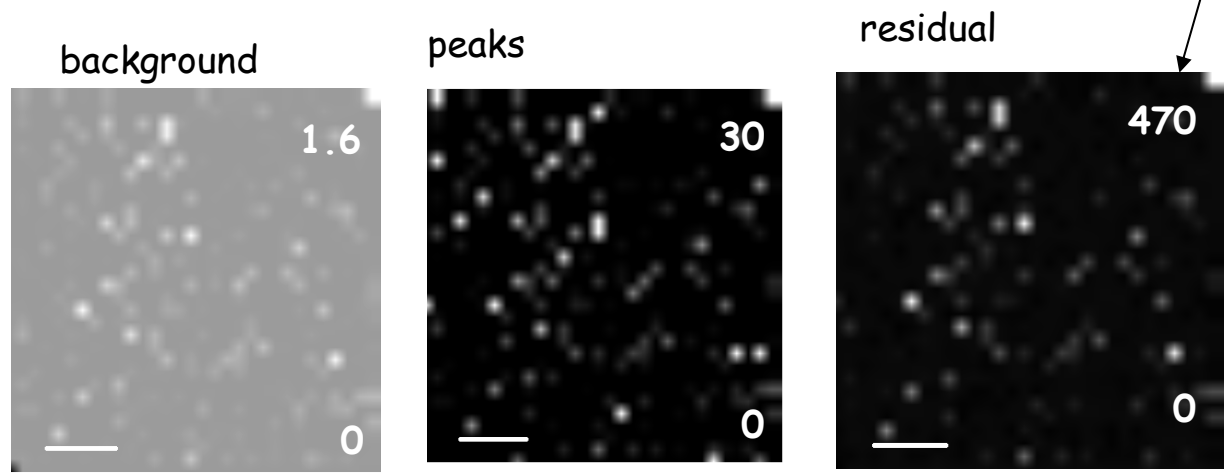


# example

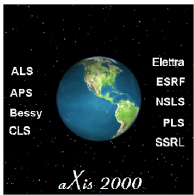
SURF\_1216\_01\_001\_Raman\_01



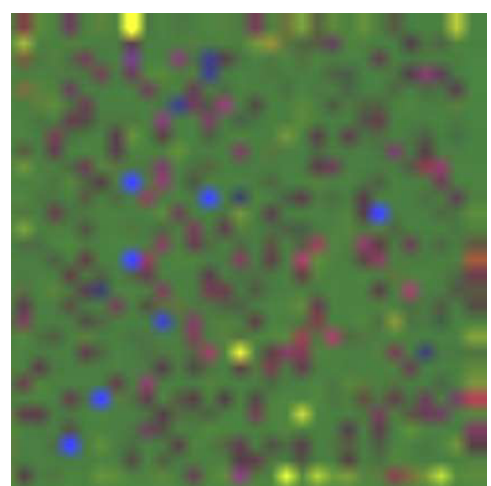
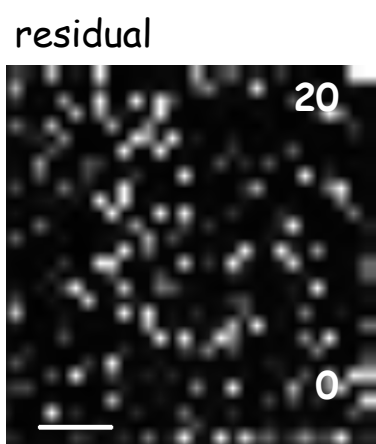
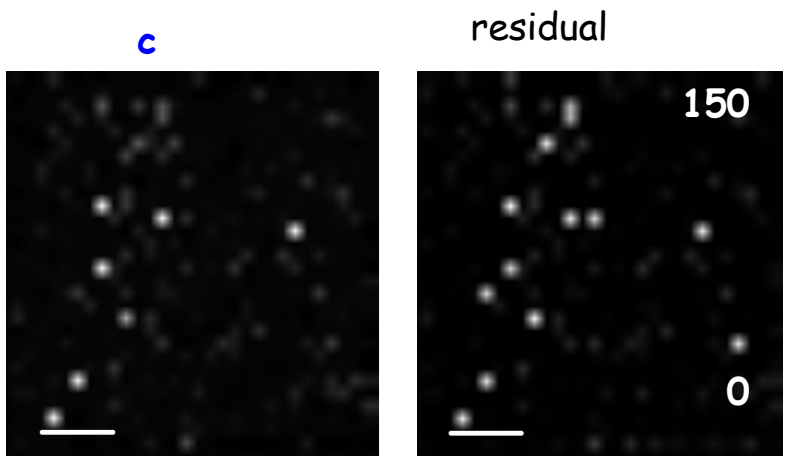
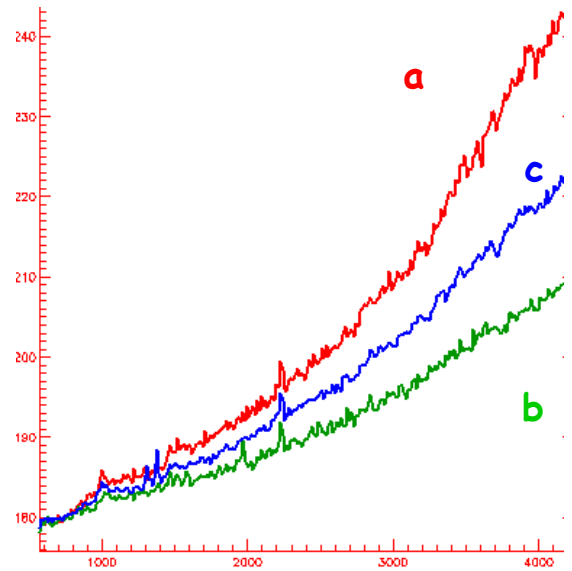
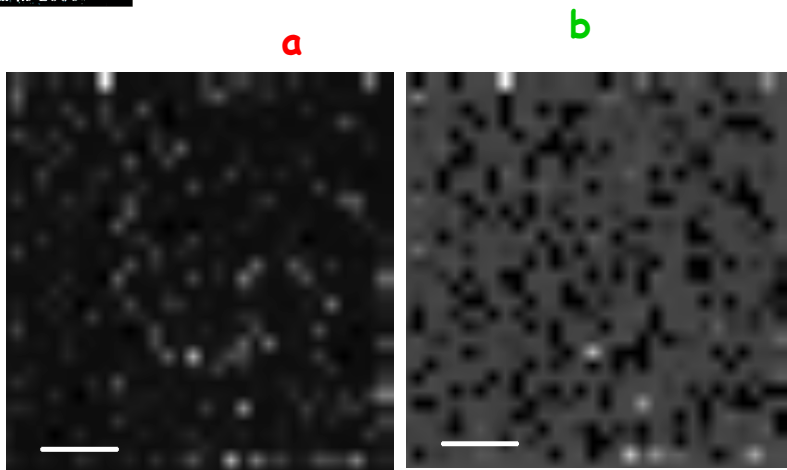
All power is in residual

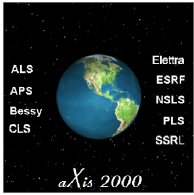






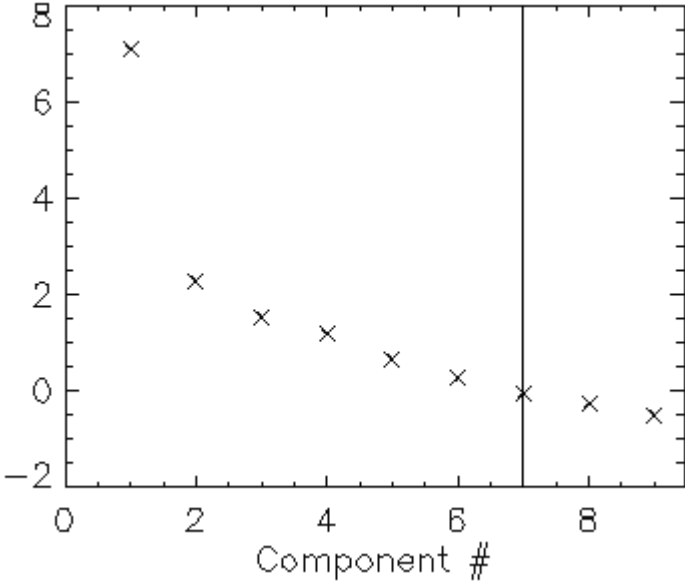
# Forward fitting: despiking & bin\*4 in energy





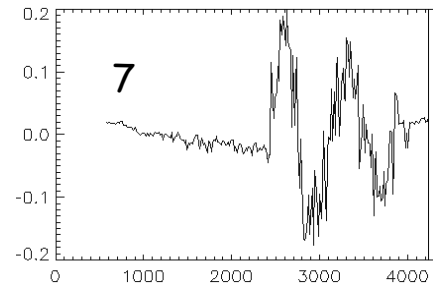
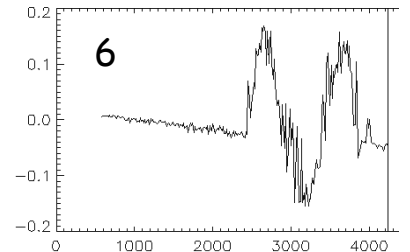
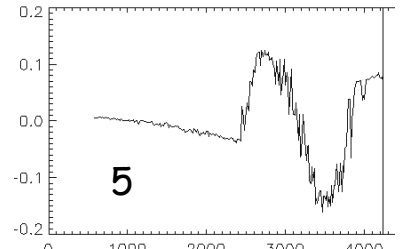
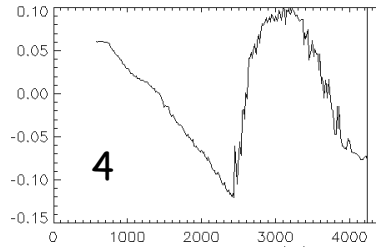
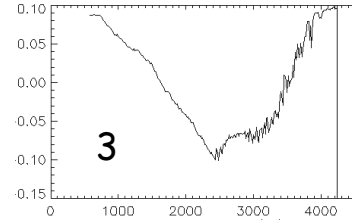
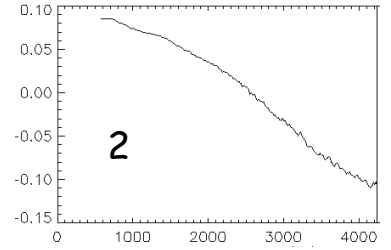
# PCA+GUI analysis

NB -ln of data

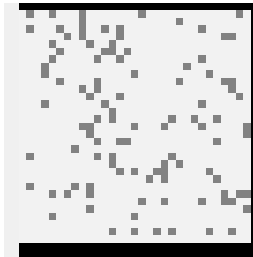
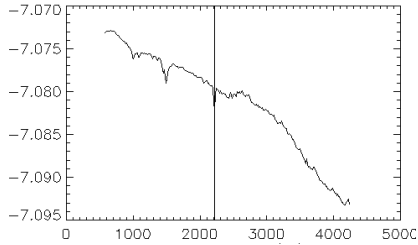


Sought 4 from 6 components (not using 1)

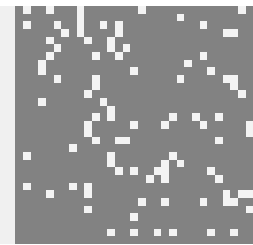
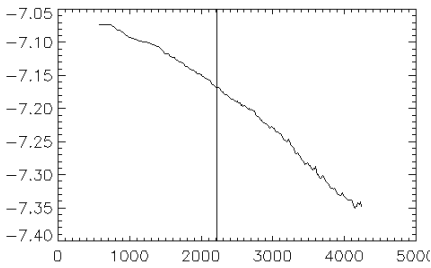
Found 3



Cluster 1



Cluster 2



Cluster 3

