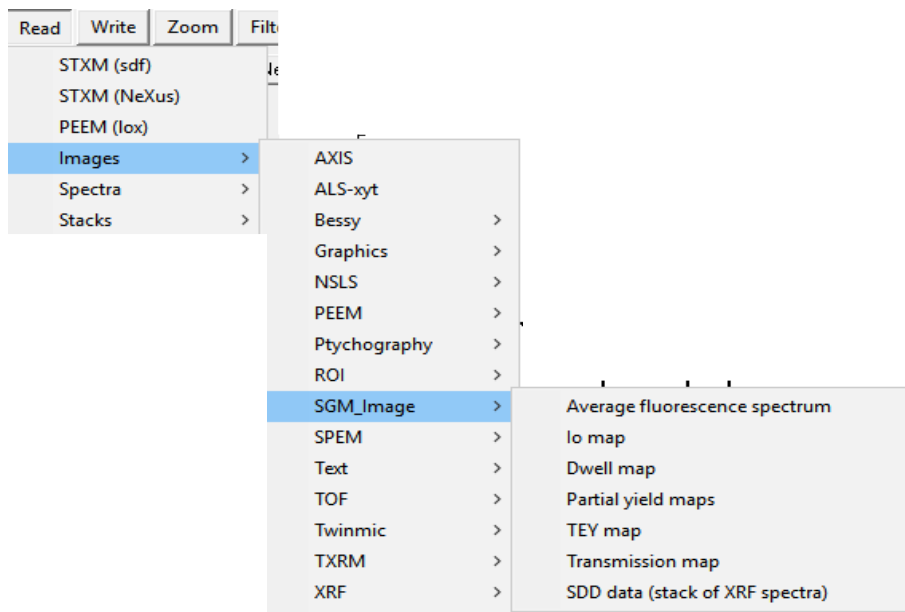


CLS-SGM_image read_in

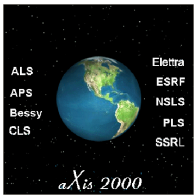


Questions:

* In preprocessing to put data on a grid, do you also correct for the non-uniform dwell ?

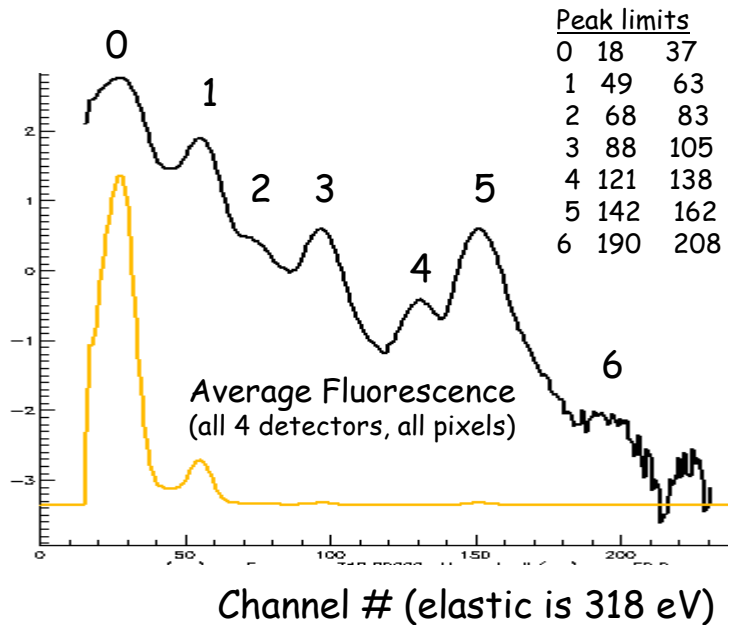
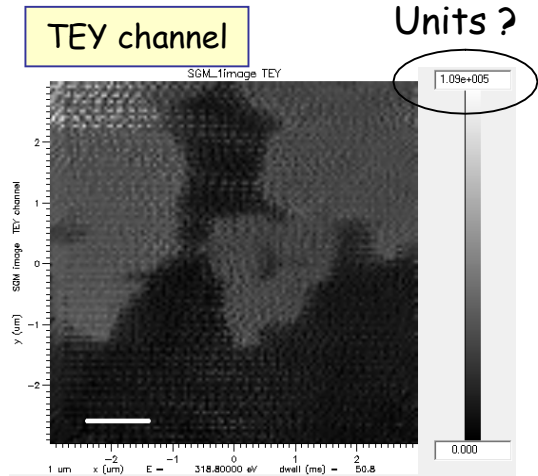
* the TEY data in SGMimage1 clips at a value of 0. Is that imposed ? Is the TEY signal put through a amplifier and V/F so negative values cannot occur ? Or is it a number - e.g. read from a Keithley ? Is the gain of any amplifier or v/f included ? Ie. Is it possible to give meaningful units to the TEY current ?

* same for the transmitted diode signal.



SGM_image read_in – single photon energy

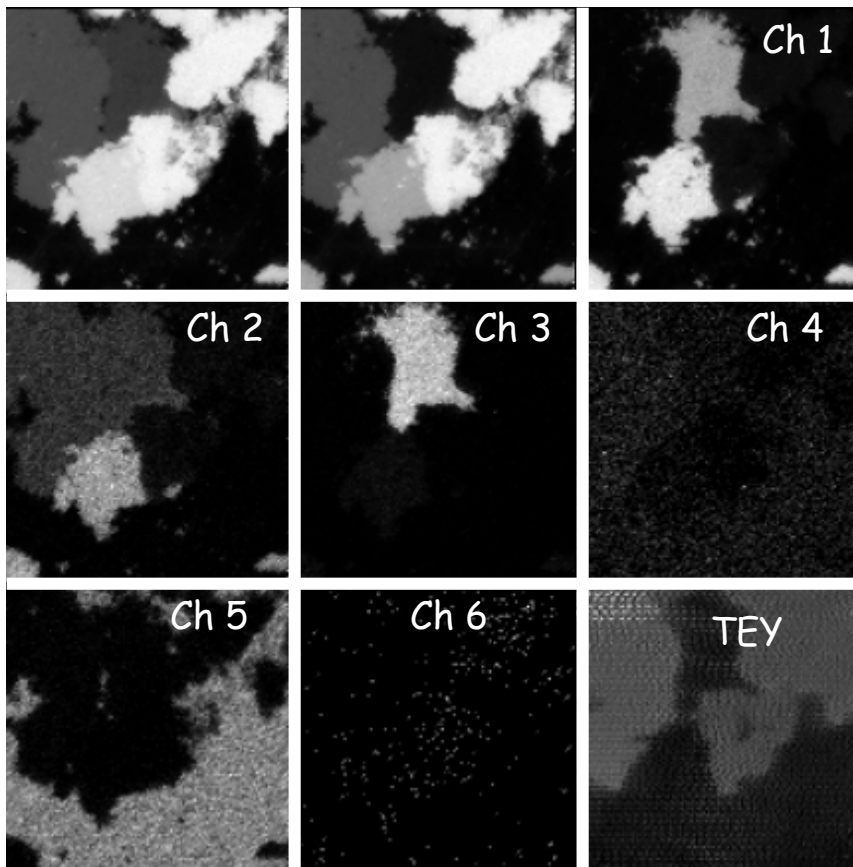
SGM_image1



Total FY

Channel 0

PFY signals



Ch 1 Ch 2 Ch 3

