

# APS XRF maps - readin procedure

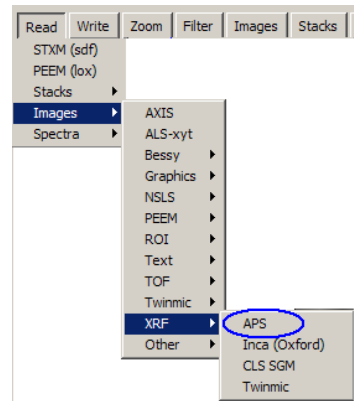
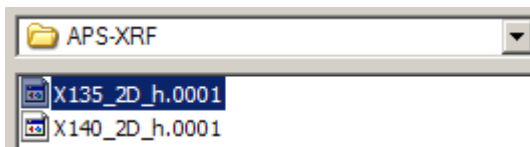
**GOAL:** develop read-in routine for APS XRF map files

**TEST DATA:** X135\_2D\_h.0001 (19x18); X140\_2D\_h.0001 (17x17)

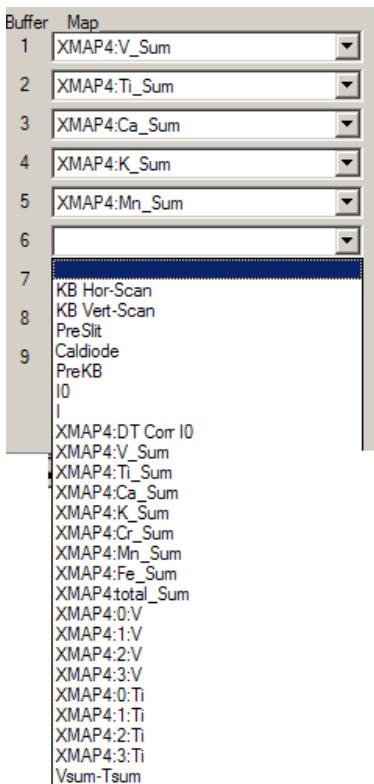
**PROCEDURE:**

0) launch read-in routine

1) select file



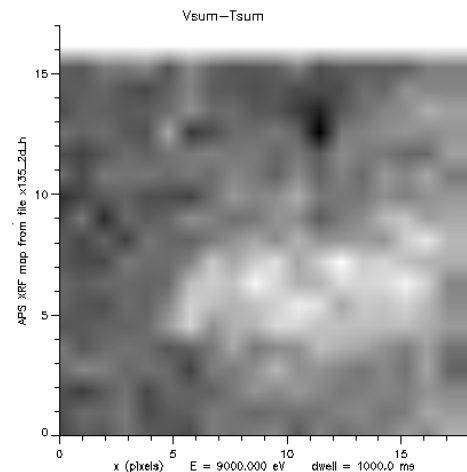
2) use XRF\_MAP\_selector to select the map for each of the 9 permanent buffers

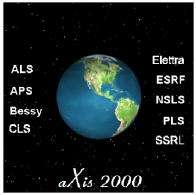


The top choice is blank - ie do not put anything into that buffer

The pattern is retained during one aXis2000 session so you only have to define the maps you wish to extract once, over multiple files (assuming the sequence, etc is same for different files)

3) "OK" loads the selected maps into the corresponding buffers

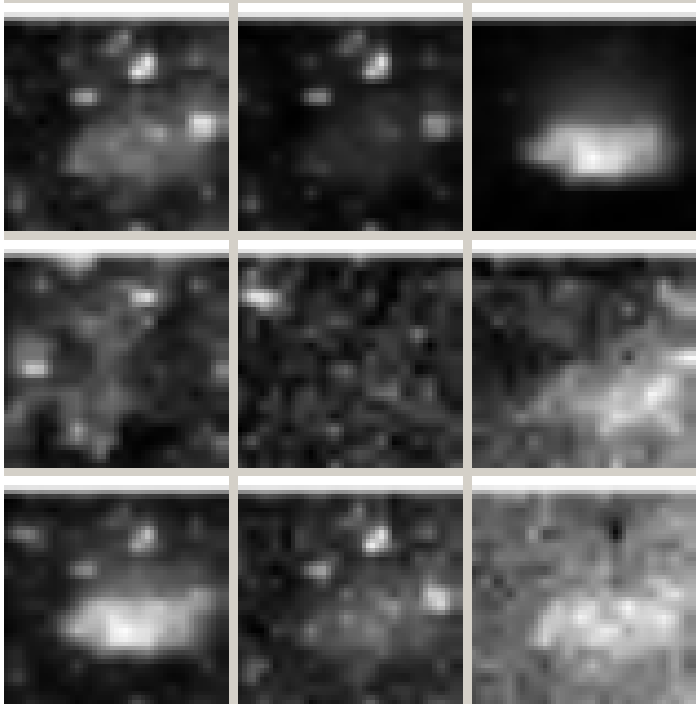




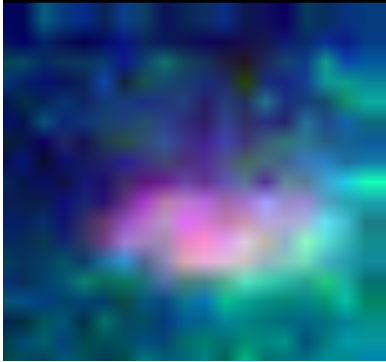
# Example (cont'd); Issues

X135\_2D\_h.0001

Buffer	Map
1	XMAP4:V_Sum
2	XMAP4:Ti_Sum
3	XMAP4:Ca_Sum
4	XMAP4:K_Sum
5	XMAP4:Mn_Sum
6	XMAP4:Fe_Sum
7	XMAP4:total_Sum
8	XMAP4:3:V
9	Vsum-Tsum



Ca Fe V-Ti



**Issues:**

- 1) there does not seem to be any spatial scale information
- 2) the dwell is not listed
- 3) in general, if the text used to identify parts of the files change the routine will need to be changed